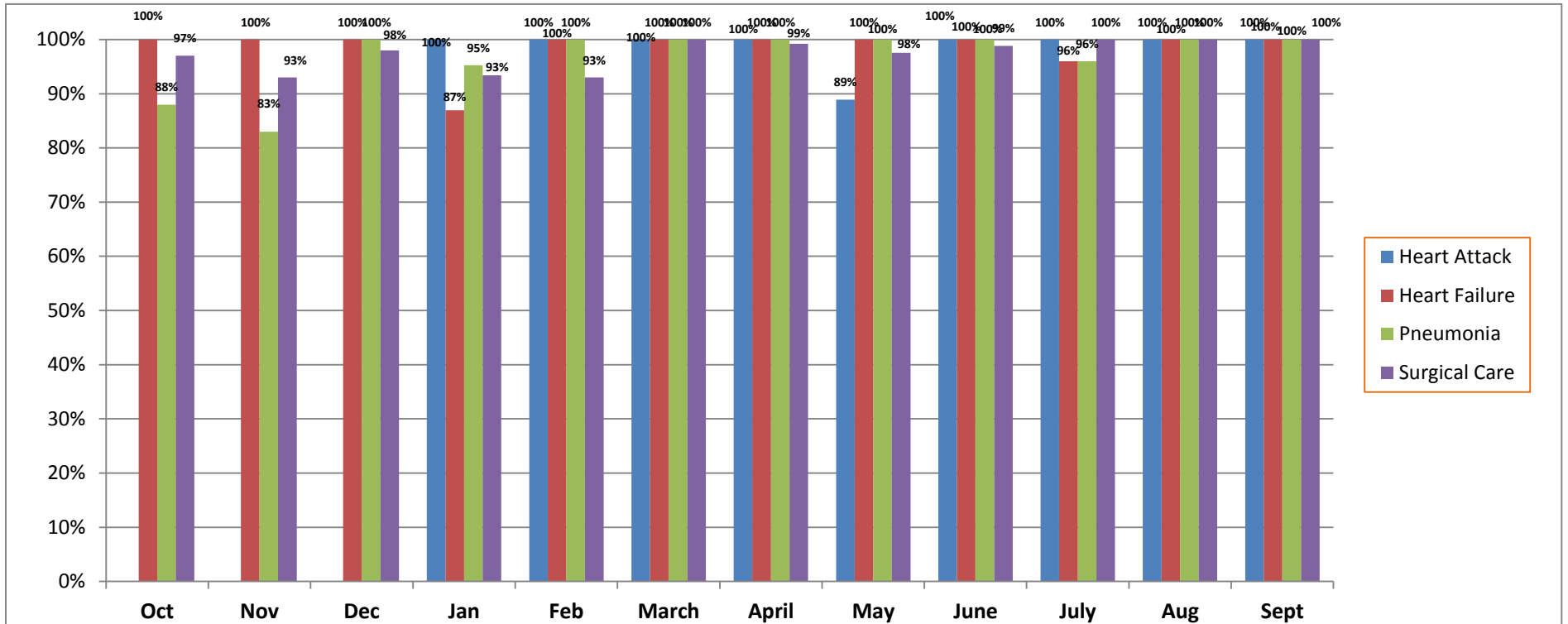


Inpatient Care Measures

2010/2011	Oct	Nov	Dec	Jan	Feb	March	April	May	June	July	Aug	Sept	Average
Heart Attack				100%	100%	100%	100%	89%	100%	100%	100%	100%	98%
Heart Failure	100%	100%	100%	87%	100%	100%	100%	100%	100%	96%	100%	100%	98%
Pneumonia	88%	83%	100%	95%	100%	100%	100%	100%	100%	96%	100%	100%	96%
Surgical Care	97%	93%	98%	93%	93%	100%	99%	98%	99%	100%	100%	100%	97%



Notes

- 1) NCMH places in the top 10% of all Joint Commission accredited hospitals in the United States. We celebrate the excellent patient care of our staff and physicians.
- 2) The blank cells for "Heart Attack" mean that there were no inpatients with heart attacks treated during that month.
- 3) We continue to score 100% for all outpatient Care Measures.

